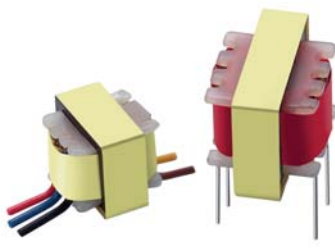
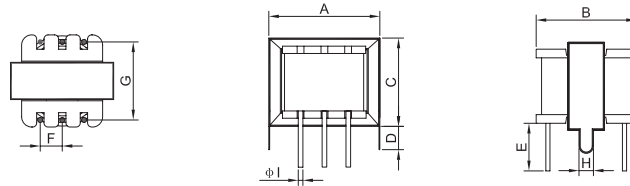


Audio transformer / 音頻變壓器


	Core shape: EI lamination series Features: <ul style="list-style-type: none"> •To correctly match a valve output stage to a low impedance loudspeaker •Frequency response: 20Hz to 20kHz •Greatly affect both the sound quality and measured performance due to quality steel sheet •RoHS Compliance 	磁芯形狀: EI 疊片系列 特性: <ul style="list-style-type: none"> •阻抗匹配 •頻率響應範圍: 20Hz to 20KHz •採用優質硅鋼片或鎳鋼片設計, 產品性能優良 •符合RoHS標準
---	---	---

Shape and external dimension / 機械尺寸mm.



Core shape 磁芯形狀	EI-14	EI-16	EI-19	EI-24
Dimension 尺寸mm				
Max. A	15.5	18.0	21.0	25.5
Max. B	12.0	16.0	14.5	17.0
Max. C	11.0	14.0	16.5	19.0
Ref. D	3.8	4.0	4.2	4.8
Min. E	5.0	5.0	5.0	5.0
Ref. F	2.5	2.8	3.0	4.5
Ref. G	13.0	13.0	13.0	14.0
Ref. H	2.0	2.2	2.2	2.6
$\pm 0.1 \phi l$	0.5	0.5	0.5	0.5
Impedance 阻抗 $\Omega \pm 15\%$ @ 1KHz	Pri.	600	500	600
	Sec.	600	500	600
DC Resistance Ω Max.	Pri.	55.0	36.0	80.0
	Sec.	50.0	35.0	66.0

Linear power supply transformer / 線性電源變壓器

	Features: <ul style="list-style-type: none"> •Low watt loss due to the quality steel sheet •Low exciting current and low no-load loss •High working efficiency •Small temperature rise •Safety standards approved •RoHS Compliance 	特性: <ul style="list-style-type: none"> •採用優質硅鋼片或鎳鋼片設計, 產品功率損耗低 •空載電流小, 空載損耗低 •效率高, 溫升低 •符合安全標準 •符合RoHS標準
---	---	--

Specification 規格型號	EI-28*12	EI-28*12	EI-35*11.5	EI-35*13.5	EI-35*15	EI-41*16	EI-41*20	EI-48*24	EI-48*30	EI-57*30	EI-66*28
Input voltage 輸入電壓 AC / V	220/50Hz	220/50Hz	230/50Hz	110/220/50Hz	230/50Hz	220/50Hz	100/120/60Hz	100/120/60Hz	230/50Hz	220/50Hz	220/50Hz
Output voltage 輸出電壓 AC / V	120/100mA	10.0	9.0	7.0	10.0	12.0	6.0	6.0,9V,12V	8.0*2	9.0*2 / 1.5A	12.0
Maximum output 最大輸出功率 VA	1.2	2.0	2.0	2.5	3.0	3.6	10.0	15.0	20.0	25.0	30.0